



# MONTHLY MEMBERSHIP PROGRESS REPORT

District 2 E1

Results as of: 05/31/2019

GMT: GREGORY GILLIAM

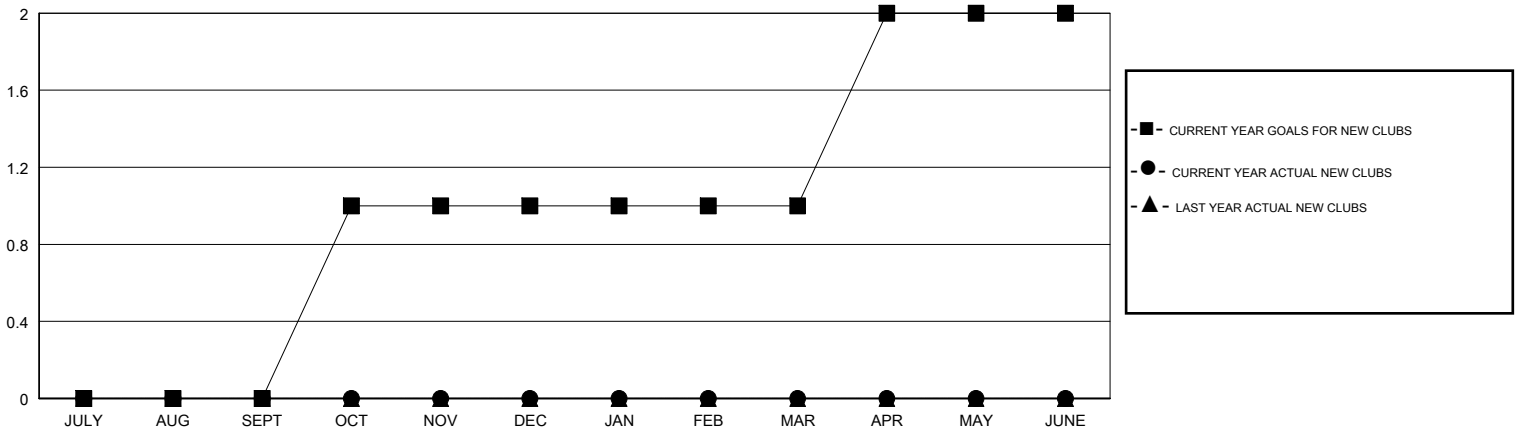
LOCATION TEXAS

GMT CA

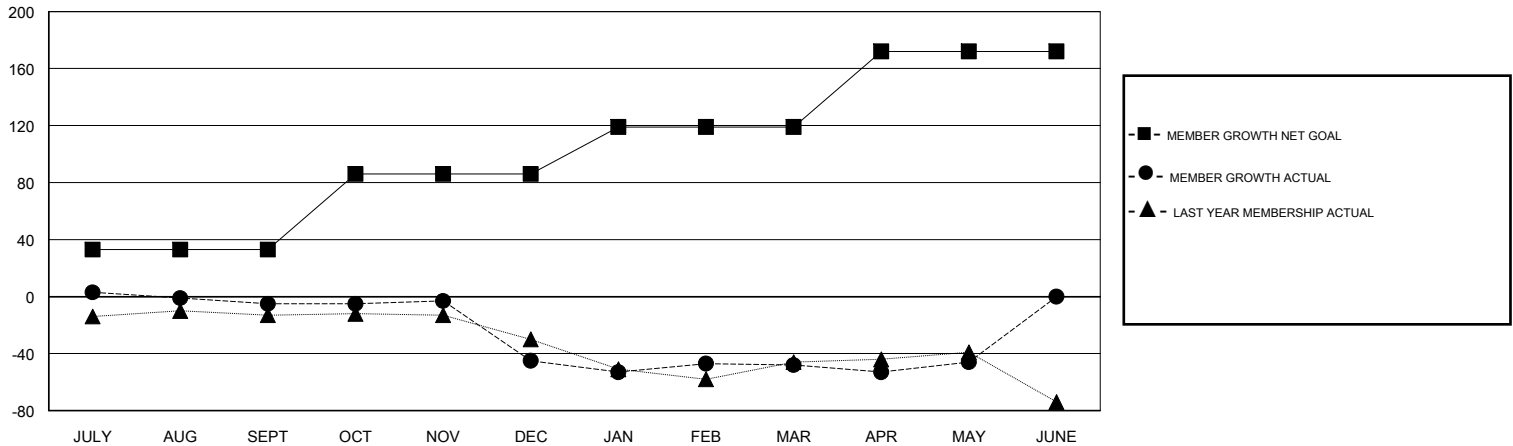
Clubs			
RESULTS FOR 2018-2019			
QUARTER	NEW CLUB GOAL	NEW CLUBS	DROPPED CLUBS
JULY/AUG/SEPT	0	0	0
OCT/NOV/DEC	1	0	3
JAN/FEB/MAR	0	0	1
APR/MAY/JUNE	1	0	0

Members			
RESULTS FOR 2018-2019			
QUARTER	MEMBER GROWTH NET GOAL	MEMBER GROWTH ACTUAL	DROPPED MEMBERS ACTUAL (including transfers)
JULY/AUG/SEPT	33	29	32
OCT/NOV/DEC	53	16	56
JAN/FEB/MAR	33	28	30
APR/MAY/JUNE	53	23	18

GOALS AND ACTUAL NEW CLUBS CUMULATIVE



GOALS AND ACTUAL MEMBERS CUMULATIVE



DROPPED CLUBS: 4

27 CLUBS OF 46 ADDED 1 OR MORE NEW MEMBERS

GENDER DISTRIBUTION

MALE 751 (73.70%)  
 FEMALE 268 (26.30%)  
 Women Percentage Fiscal Year Goal: 20%

DROPPED MEMBERS

[CLICK HERE FOR CUMULATIVE MEMBERSHIP DATA](#)

DECEASED	7
CLUB CANCELLED	33
OTHER	96
<b>TOTAL</b>	<b>136</b>

TOTAL FAMILY UNIT MEMBERS	96
FAMILY MEMBERS PAYING HALF DUES	48